

Music Hall of Williamsburg

66 North 6th St. (between Kent and Wythe)

Brooklyn, NY 11249

Ph.718-486-5407 / Fax 718-486-5410

www.musichallofwilliamsburg.com

Capacity 650

Venue Info

Parking	We cannot reserve any parking here. Buses cannot park on N.6th
Load in (Van and trucks < 26')	Right out front, by fire hydrant
Load in (Bus / Trailers / Trucks > 26')	From corner of N.6th and Wythe. Just in front of bus stop. Parking unlikely. Bus will probably have to go back to hotel.
Stage Dimensions	25' wide x 18' deep x 4' from floor
Stage Deck to lighting pipes	14'
Stage type	Concrete, black vinyl cover ("marly")
Barricade	Per Advance
FOH Position	In booth 30' from front of stage.
Lighting Position	In booth 30' from front of stage.
Monitor Position	Stage Right
Power Audio	100amp 3 phase disconnect. Cam Lok. Ground/neutral reversed
Power Lighting	200amp 3phase. Tee off of existing service unless using a pass-thru distro. Cam-Lok ground/neutral reversed
PA Rigging	Dead Hang off I-Beam
Lighting Rigging	Dead Hang off pipe
Soft Goods	Backstage, ground floor 25'x14' white leno drop for projection One fixed backdrop pipe in front of curtain (25') One lowerable backdrop pipe behind curtain (20')
Dressing Rooms	2 smaller for support. 1 large ensuite for headliner
Location	Access from stage left. corridor above stage
Bathrooms	1 shared, 1 private in main dressing room
Showers	1 shared, 1 private in main dressing room
Laundry	Not in house. Locations within walking distance
Catering	Outside catering allowed
Internet Network	MHBands <i>The up/down bandwidth at MHoW is 20 Mbps.</i>
Internet Password	runDMC66
Multi Track Audio Recording	requires prior approval and origination fee
Videotaping	requires prior approval and origination fee
Haze, Smoke Machines, Atmospherics	These set off the alarms. Requires hiring a fire guard. Cost is \$225. Must be booked in advance. Use of any lasers, cryo, pyro, and certain types of confetti cannons, need proper local permits in place before load-in, and obtaining those permits is the responsibility of the performing artist.
Video	Christie 6500 Lumen projector available. w/ zoom lens package

**MUSIC HALL OF
WILLIAMSBURG**

FOH CONSOLE - Midas Heritage 3000 (44 mono, 4 stereo, 24 mix/group out, 8 matrix, 10 VCA)

Outboard (list subject to change and substitution)

BSS FCS-960 stereo eq

TC Electronics D-Two

TC Electronics M-One

Lexicon PCM81

Yamaha SPX2000

2x Drawmer Quad-Gate DS404

2x Drawmer Dual-Auto Compressor DL241

2x BSS Dynamic Equalizer DPR-901 II

2x dbx 160XT

Drawmer Dual Gate DS201

9x dbx 160A

PA

16 x L'Acoustics dV-DOSC flown (8 per side)

4 x L'Acoustics dV-DOSC SUB flown (3x15" per cabinet)

6 x L'Acoustics V-DOSC SB-28 SUB (2x18" per cabinet)

All powered by L'Acoustic amp LA48a

2 x XTA DP448 loudspeaker management system

MONITORS

1 YAMAHA M7CL Digital Console

-48 mono inputs

-4 Stereo inputs

-16 Mix outputs (Up to 10 powered mixes available)

10 X 115 HiQ L'Acoustic floor monitors

1 X Drum Fill: 1xL'Acoustic SB18 (1x18) cabinet + L'Acoustic ARC

2 X L'acoustic Arc's. (generally used in sidfill application)

All powered by L'Acoustic LA48a or LA4

2 x XTA DP448 loudspeaker management system

2 x XTA DP446 loudspeaker management system

56 Channel split (Radial) with 3rd way record split.

Origination fee's apply to any multitrack recording



MICS: (This list is subject to substitution and change due to breakage etc....)

9 x Shure SM-58
10 x Shure SM-57
2 x Shure SM-Beta 57a
9 x Shure SM-Beta 58
3 x Shure Beta-52
2 x Shure SM91
2 x Shure KSM32
2 x Shure Beta 98
6 x Sennheiser 604
2 x Sennheiser 609
2 x Audio-Technica 4050
4 x Shure SM81
1 x Blue Encore 100 vocal mic - similar to SM58
1 x Blue Encore 200 vocal mic (active/dynamic)-similar to Beta58/87
1 x AKG D112
1 x Sennheisser 421
2 x radial passive DI
3 x radial active DI
2 x radial stereo DI
4 x misc. passive DI
asst K&M stands, sub-snakes, xlr cables



DJ Gear/Backline

4 piece Canopus Drum Kit with 22" Kick, 13" tom, 16" Floor.

1 Ampeg SVT-7 PRO bass head

1 TC Electronic 2x12 bass cabinet

2 Technics SL-1200 MK 2 Turntables

1 Pioneer DJM-600 Mixer

2 Pioneer CDJ 1000 CD/MP3 Players (no USB, No Network capabilities)

Drummers: Bring snare, cymbals, and all cymbal stands. We only supply shells.

Drums provided by

CANOPUS

Designed To Be Different



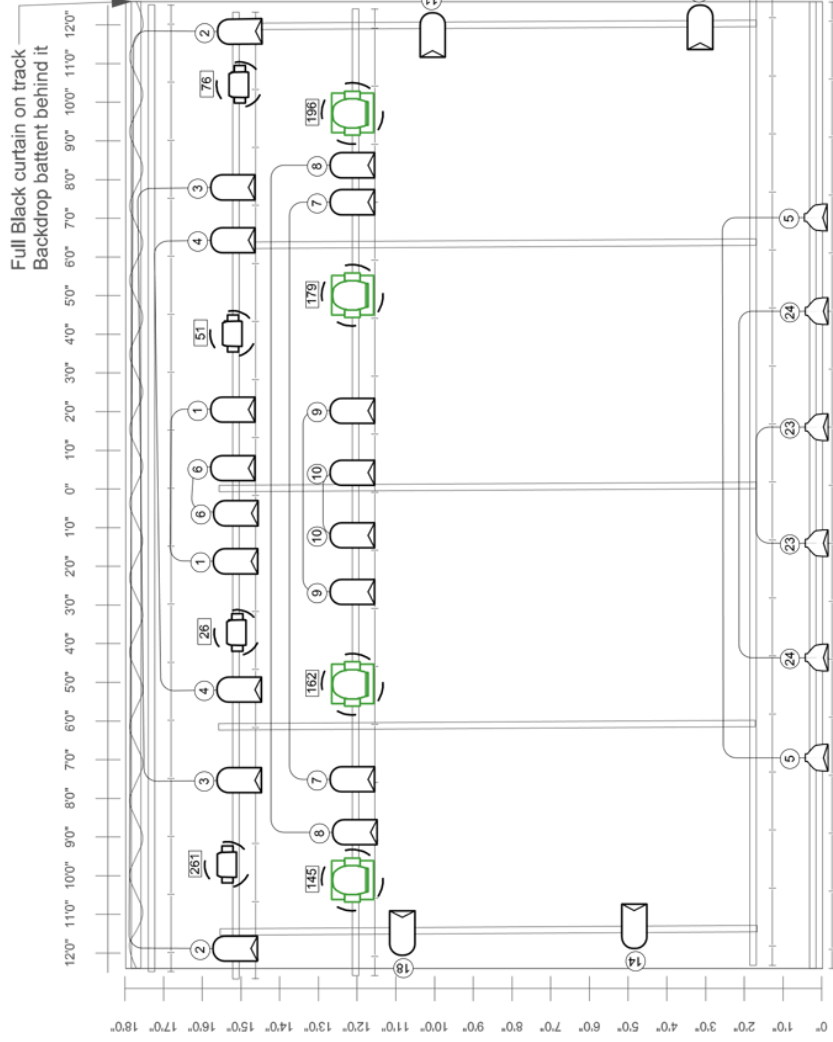
Projector Spec

Christie LX650 w/ these lens options.

2.4 - 4.3:1 Zoom (currently installed for long throw application)

1.8 - 2.4:1 Zoom

Image	<ul style="list-style-type: none">• 6500 ANSI lumens• 90% brightness uniformity• Contrast ratio: 2000:1 full field
Display Technology	<ul style="list-style-type: none">• 3 x 1.3" LCD panels• Native XGA 1024 x 768 resolution
Input Signal Compatibility	<ul style="list-style-type: none">• VGA through UXGA (1600 x 1200)• Horizontal and vertical scaling, all inputs• Supports standard HDTV formats (480i, 480p, 575i, 575p, 720p, 1035i, and 1080i, 1080p via digital connection only)
Scan Rates	<ul style="list-style-type: none">• Horizontal – 15 kHz to 100 kHz• Vertical – 48 Hz to 100 Hz• Pixel clock - 180 MHz
Inputs	<ul style="list-style-type: none">• DVI-D HDCP Compliant• HD15• 5-BNC: RGBHV/YPbPr• Composite video, S-video• Component video (3RCA)• DB9-RS232• USB (type B)• Monitor out (analog)



Light

- Altman 18in Scoop @ 1.5kw
- ETC CE Source4 19deg @ 575w
- ETC CE Source4 28deg @ 575w
- ETC CE Source4 36deg @ 575w
- ETC CE Source4 PAR MCM (WFL) @ 575w
- ETC CE Source4 Zoom 25-50deg @ 575w
- USITT PAR56-WFL

Moving Light

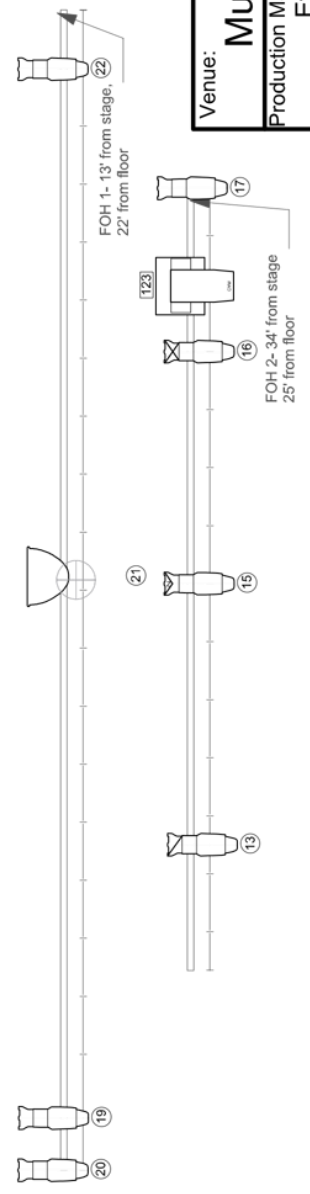
- Martin MAC Aura @ 236w
- Rush WH 1 Profile @ 320w
- VL 2500 @ 700w

Typical

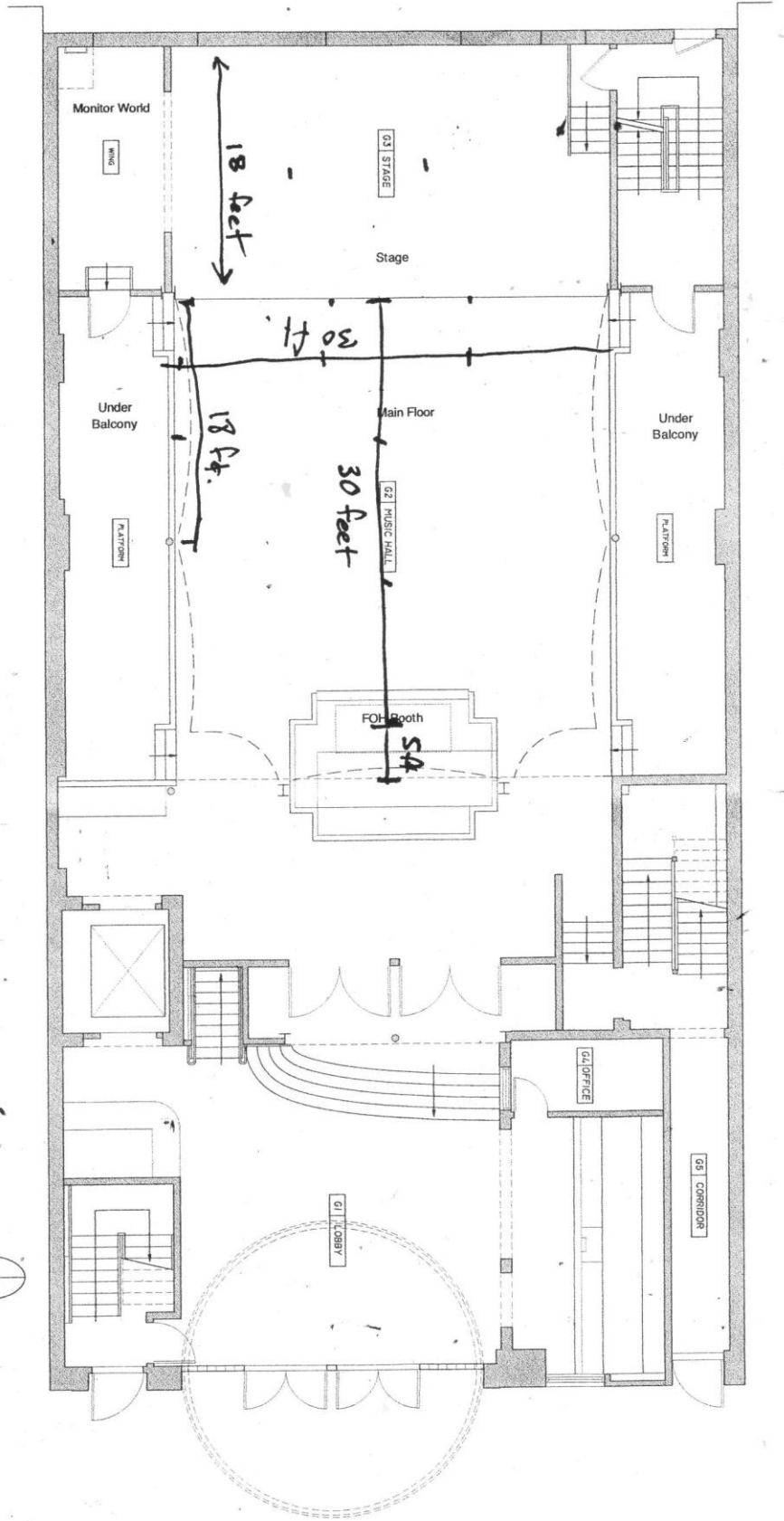
Address

NOTES

STAGE is 25X18'x4'
 Stage lighting Positions : 14' from stage
 FOH Lighting Desk 30' from Stage
 - Conventionals and Movers are on separate universes
 - Color and focus of Par 64s subject to change.
 - 2x dmx lines from DSR to FOH
 - VGA 1x DSR stage to projector 1x FOH to projector



Ground Floor Plan



Driving Directions (for trucks, buses, vans with trailers)
DO NOT ATTEMPT TO BRING YOUR BUS OR TRUCK DOWN N.6TH STREET
<http://www.nyc.gov/html/dot/html/motorist/trucks.shtml>

From I278 West (RFK Bridge)

1. I278 W. towards Staten Island/Brooklyn
2. Exit 34 Meeker Ave (Follow detours if overheight)
3. Left on Meeker Ave
4. Right on McGuinness Blvd
5. Left on Greenpoint
6. Left on Franklin
7. Left on N. 14th St
8. Right on Wythe
9. Follow Wythe to N.6th. Trucks, Buses pull over into bus stop on right just passed the light. Pull as far forward as possible.
10. Venue is on down N.6th on the left between Wythe and Kent.

From I278 East (Points south, Verazzano Bridge, Staten Island)

1. I278 East
2. Exit 30 Flushing Ave.
3. Merge onto Classon Ave
4. Left on Kent
5. Right on N.14th (Vans can turn right on N.7th if you please)
6. Right on Wythe
7. Follow Wythe to N. 6th. Again trucks and buses pull over into bus stop on right passed the light. Pull up as far as possible
8. Venue is on down N.6th on the left between Wythe and Kent.

From the City (Williamsburg Bridge)

1. Stay in far right lane
2. Exit Broadway West/ to I278 W/Staten Island
3. Sharp right on Broadway
4. Right on Kent
5. Right on N.14th (Vans can turn right on N.7th if you please)
6. Right on Wythe
7. Follow Wythe to N. 6th. Trucks, Buses pull over into bus stop on right just passed the light. Pull as far forward as possible.
8. Venue is on down N.6th on the left between Wythe and Kent.

Mass Transit

1. Ferries from Midtown or South Street Seaport to Williamsburg. Dock is at the very bottom of N.6th
2. LTrain to Bedford Ave. Walk down Bedford to N.6th and make a right.

Area Hotels

Hotel Le Jolie

235 Meeker Ave, Brooklyn, NY, 11211 United States
(718) 625-2100

www.hotellejolie.com/

Note - Can usually accommodate buses

McCarren Hotel

160 North 12th Street, Brooklyn. NY 11249
718-218-7500

<http://www.chelseahotels.com/us/brooklyn/mccarren-hotel-and-pool/about>

The Henry Norman

251 N Henry St, Brooklyn, NY 11222
(718) 951-6000

<http://www.henrynormanhotel.com/>

Wythe Hotel

80 Wythe Avenue Brooklyn, NY 11249
718-460-8000

<http://wythehotel.com/>

Note - Has a band room that sleeps 4 or more. Book well in advance if possible

Holiday Inn - Manhattan View

3905 29th Street, Long Island City, NY
(718) 707-3700

holidayinnmanhattanview.com

Four Points by Sheraton Long Island City

27-05 39th Avenue
Long Island City, NY 11101
(718) 786-8500

<http://www.starwoodhotels.com/fourpoints/property/overview/index.html?propertyID=3540>

Fairfield Inn by Marriott

52-34 Van Dam Street
Long Island City, NY 11101
(718) 389-7700

<http://www.marriott.com/hotels/travel/nycfq-fairfield-inn-new-york-long-island-city-manhattan-view/>

Comfort Inn

42-24 Crescent Street
New York, NY 11101

<http://www.comfortinnlic.com/>

Wyndham Garden Long Island City Manhattan View

44-29 9th Street, Long Island City, NY 11101
1-888-310-2100

<http://www.wyndham.com/>

Music Stores

Main Drag Music
330 Wythe Avenue Brooklyn, NY 11211
(718) 388-6365
www.maindragmusic.com
5 minute walk

Guitar Center
25 W. 14th Street
Manhattan, NY 10011
Phone: (212) 463-7500
<http://www.guitarcenter.com/>
15 minutes each way on L-Train

Computer / Pro Audio

Mikeys Hook Up
88 North 6th Street Brooklyn, NY 11211
(718) 599-8906
www.mikeyshookup.com
Apple Authorized Re-seller, pro audio, cables etc..
½ block away

Rental Companies (closest to venue)

Sound and Lighting

See Factor Industry
Alban Szardinsky
AlbanS@SeeFactor.com

Backline Rental

Moon Man Productions
38-10 29th St. LIC NY 11101
(646) 343-5258
Ricardo Wilkinson
moonman4life@gmail.com

Misc.

Crest Hardware
558 Metropolitan Ave
(between Union Ave & Lorimer St)
Brooklyn, NY 11211